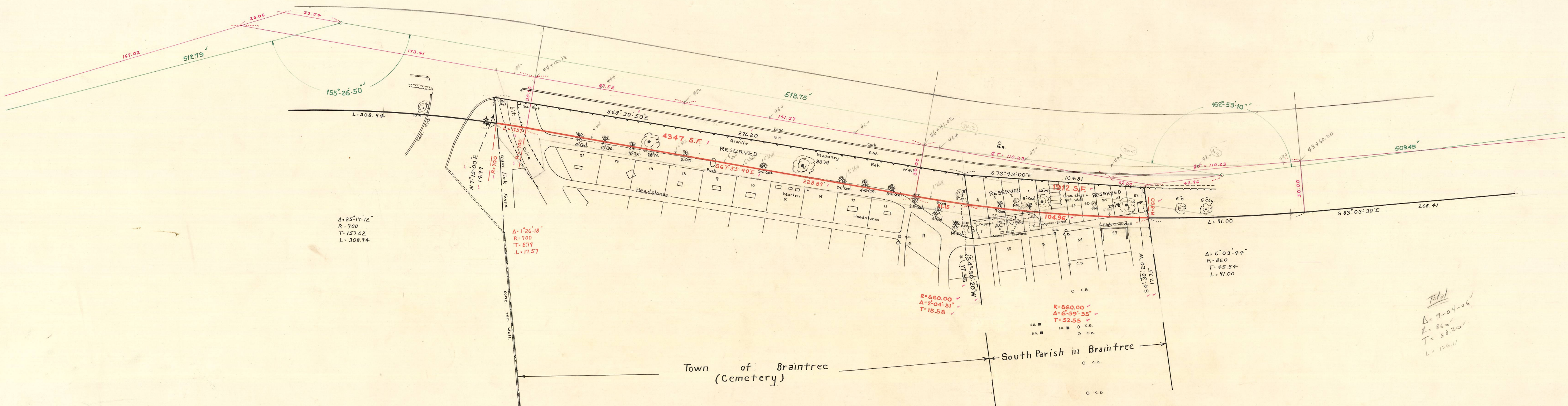
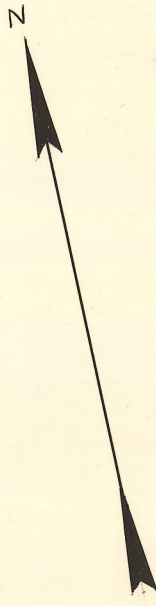


44170.57

49189.32



$\Delta = 25^{\circ}17'12''$   
 $R = 700$   
 $T = 157.02$   
 $L = 308.94$

$\Delta = 1^{\circ}26'18''$   
 $R = 700$   
 $T = 8.79$   
 $L = 17.57$

$\Delta = 6^{\circ}03'44''$   
 $R = 860$   
 $T = 45.54$   
 $L = 91.00$

$R = 860.00$   
 $\Delta = 2^{\circ}04'31''$   
 $T = 15.58$

$R = 860.00$   
 $\Delta = 6^{\circ}59'35''$   
 $T = 52.55$

Total  
 $\Delta = 7^{\circ}04'06''$   
 $R = 860$   
 $T = 68.20$   
 $L = 136.11$

Town of Braintree  
(Cemetery)

South Parish in Braintree

NORFOLK COUNTY — ENGINEERS DEPT.	
Town BRAINTREE	Street POND
Date	Scale 1" = 20'
Field Book 305	House Book
Calc. Book	Envelope # 609