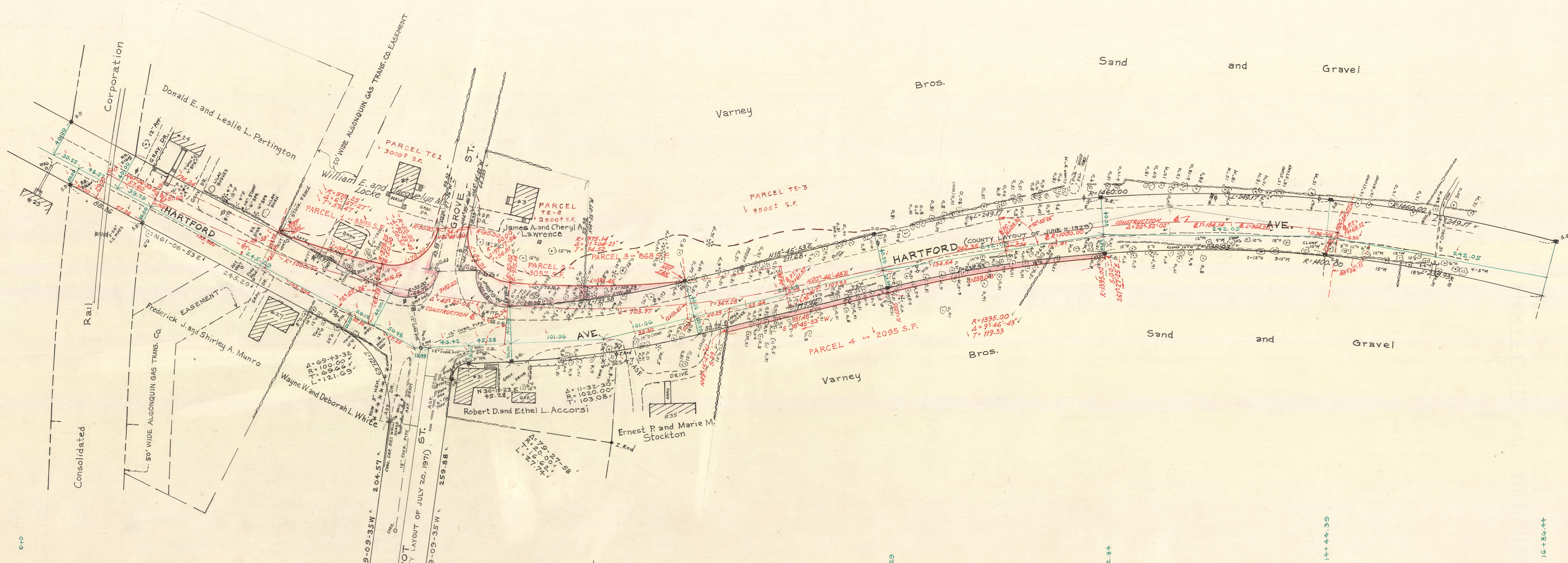


BASED ON JULY 20, 1971  
COUNTY LAYOUT OF DEPOT STREET



NORFOLK COUNTY — ENGINEERS DEPT.	
Town BELLINGHAM	Street HARTFORD AVE
Date APRIL, 1987	Scale 4" = 1"
Field Book 489	House Book —
Calc. Book —	Envelope 41

NORFOLK COUNTY — ENGINEERS DEPT.	
Town BELLINGHAM	Street HARTFORD AVE
Date APRIL, 1987	Scale 4" = 1"
Field Book 489	House Book —
Calc. Book —	Envelope 41